



all ages . . . all styles . . . all abilities

46066 First Avenue  
Chilliwack BC V2P 1W1  
Phone: 604-792-0790  
Fax: 604-792-0731

admin@chwkacademyofmusic.org  
www.chwkacademyofmusic.org

#### **BOARD OF TRUSTEES**

President  
Howard Davies

Vice President  
Corey Dreveny

Treasurer  
Rick Paulding

Secretary  
Nancy Browne

Historian  
Hilda Martens

Paul Boileau  
Lorna MacLaren  
Barbara Murray  
Maneesh Saini  
Margaret Smiley

#### **STAFF**

Principal  
Shaun Taylor

Business Manager  
Maria Ness

Registrar /  
Office Administrator  
Janeen Down

# Musical Notes

Newsletter of the Chilliwack Academy of Music – Summer 2009

## *Principal's Message*

The Chilliwack Academy of Music will soon enter its final year of occupying the stately grey heritage house on First Avenue that it uses for the bulk of its operations. While we will of course be somewhat sad to leave our current cozy home, the reason for the move could not be more exciting – our partnership with the Chilliwack Community Arts Council, Chilliwack Players Guild, Chilliwack Visual Artists Association and the City of Chilliwack on the new Chilliwack Cultural Centre. The amazing new purpose built facility is slated for completion in the spring of 2010 and the Academy will move its operations over to the new building in July of next year. (For more information on the Chilliwack Cultural Centre project, including artist renderings, please visit the City of Chilliwack website at [www.gov.chilliwack.bc.ca](http://www.gov.chilliwack.bc.ca).)

I am also thrilled to mention that next year is the 30<sup>th</sup> Anniversary of the Academy. One can only wonder if former Chilliwack resident, Lori Onsrage, knew what she was starting in 1979 when she and the other founding board members formed the Chilliwack Academy of Music Society. The Academy started with one violin teacher that year instructing eight students and now has seventeen faculty directly serving 800 students a year through lessons, classes, performing ensembles and outreach programs.

With the upcoming move into the Chilliwack Cultural Centre and the 30<sup>th</sup> Anniversary, the 2009-10 school year will be one of major transition as well as one of major celebration. There will be a final fundraising push to raise funds for the purchase of pianos, the sale of the Academy building, special events and celebratory concerts. We have one wild ride ahead of us next year and I want to sincerely thank you for your continued support and your belief in the Academy and its mission. I look forward to experiencing with you all of the joy and excitement that next year will bring!

Shaun Taylor,  
Principal

---

#### **Society Mission Statement:**

The Chilliwack Academy of Music aims to provide high quality music instruction, foster interest and participation in music, and increase musical opportunities in the community.

---

## Faculty Conversation



### *Nilan Ritter*

*Guitar (rock/jazz/blues/country)*

#### **Are you a native of Canada?**

No, I was born in New Jersey where I lived for 30 years. I moved to Langley, BC in 1982 after meeting my wife in the US, who was Canadian, and in 2002 I moved to Chilliwack and fell in love with it.

#### **What was your first instrument?**

Guitar was my first instrument, but I always say that the guitar picked me. When I was about seven I used to begrudgingly rake leaves for money and my Dad gave me \$1. I asked my sister to go out and buy me a 45-rpm record and she bought me "O Donna" by Richie Valens, and I really did not like it. Fortunately, I turned the record over and heard the guitar intro to "La Bamba" and I was hooked. I forgave my sister.

#### **Were there any musicians that inspired you when you were younger?**

I got my first guitar when I was seven. I had a friend my age who lived across the street and was a naturally talented pianist. He did a lot of playing by ear, but he had a way of teaching me music that just made sense. He taught me all about things like the circle of fifths and chords, as he just seemed to speak music. I was not taking lessons from him but he was certainly teaching me, and that really instilled in me the gift that teaching can give. Any guitar playing at all inspired me as a young player, whether it was Frank Zappa or a commercial, as I just took it all in.

#### **Describe your formal musical training?**

I taught myself how to read music and I loved reading anything about music theory. I know that sounds weird but I really enjoyed it. When it came time for post secondary education, I had a choice to either go to University on a baseball scholarship or play guitar for a living – I chose the guitar. As I was touring and playing all over the USA, I would take lessons with whoever was available in whatever town I happened to be in that week. When The Guitar Study Center of Manhattan opened (now known as The New School for Jazz and Contemporary Music), I studied guitar there. When I was 25, I was in Boston and took guitar and composition classes at the Berklee College of Music and attended guitar workshops. Later on, I also studied at the Musicians' Institute in Hollywood where I was able to study with Tommy Tedesco. I have been very fortunate in that I have had some fantastic teachers including Pat Martino, Jody Fisher, Don Mock and a host of others.

#### **What CDs or radio stations do you listen to in the car or at home?**

My CD's player has everything in it from big band to jazz, metal, rock, country, and anything else that has a guitar. Ella Fitzgerald is the only vocalist I listen to.

#### **Do you have anything in general you would like to say about music lessons or the Academy?**

Teachers are entrusted with shaping and influencing young musicians and this is a very precious thing. We have to make sure that we never close doors – only open them. For any students that read this I want to say that perseverance will bring success. Music is a gift for everyone to appreciate whether it is by yourself, with your friends, as a semi-professional musician or a professional musician.

### *We need your input!*

Please visit the Academy website during the months of May and June and fill out our "Parent and Student Satisfaction Survey." Remember to give your name to be entered into our prize draw!



### *Dickens Dinner Committee*

is seeking parent and student volunteers to join the planning committee (meeting on Tuesday mornings) and/or to help secure silent auction items. The event will be on Friday, December 4<sup>th</sup>. If you are interested please contact Principal Shaun Taylor.



## ***Student, Student Alumni and Faculty News***

- **Chilliwack Women's Chorus** (directed by Paula Quick) performed at the 23<sup>rd</sup> Annual Ann Davis Bread and Roses Celebration. **Lisa Scyner** (Academy voice department) was one of the women honored at the celebration.
- **Paula Quick** had the honour of serving as an adjudicator at the Kelowna Music Festival in April of this year.
- Congratulations to those asked to represent Chilliwack for the 2009 Provincial Music Festival:
  - **Emily Janzen** and **Claire McGladrey**, voice (studio of Paula Quick)
  - **Chilliwack Women's Chorus**, choral (directed by Paula Quick)
  - **Alexandrine Sauvé**, guitar (studio of Rod Swanson)
- **Dylan Weightman** (alumni percussion) has recently launched a new CD with his Chilliwack-based band called *Pardon My Striptease*.
- **Rebecca Paulding** (alumni piano and voice) was awarded the role of Mercedes in a production of *Carmen* being performed this summer in the Czech Republic.

## ***Music Festival Performers***

**Congratulations** to all Chilliwack Academy of Music students who participated in the Chilliwack Lions Club Festival and other music festivals around the Lower Mainland this spring. The trophies and awards that were presented to each one of you are in indication of the skill level that you have achieved through your hard work and dedication.

On behalf of the faculty members and staff, **well done!**

The Academy is pleased to announce the creation of four new **post-secondary music scholarships** that are made possible through a partnership with 89.5 The Hawk. The applications can be downloaded from the Academy website and the deadline to apply is June 1, 2009. If you have any questions please contact the Academy Principal.



---

## ***Early Registration 2009 – 2010***

### **Returning Students:**

Early Registration will take place in the month of June, on a "first come first served" basis. A deposit of \$80 and all post dated cheques or signed credit card authorization will hold your lesson time and confirm your registration for the fall 2009-10 term. The deposit is non refundable but becomes a credit towards the first payment.

Registrations not renewed by the end of June  
will be processed as per "New Students" below.

### **New Students:**

Early Registration is on a "first come first served" basis, beginning July 6<sup>th</sup> and continuing until August 31<sup>st</sup>. A deposit of \$80 (non-refundable) and all post dated cheques or signed credit card authorization will hold your lesson time and confirm your registration for the fall 2009-10 term. As of September 1<sup>st</sup> and ongoing, tuition is calculated according to the number of weeks left in the term, and payments must be arranged at the time of registration, as per the payment plan options.

### **Summer Students:**

Registration will take place in the month of June. Payment in full is required prior to commencement of lessons.

### **Payment of Fees**

It is school policy that fees are payable in advance **for the entire academic year** or remaining part thereof. (Payment Plan options, scholarships, and bursaries available)

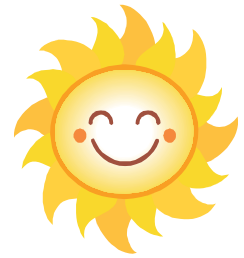


Board Historian, Hilda Martens and Trustee, Lorna MacLaren are working on a comprehensive history of the Academy in preparation for saying goodbye to our current facility and our upcoming move into the Chilliwack Cultural Centre.

They are looking for photos, memories and stories that can be submitted to the Academy, by email if possible, to [principal@chwacademyofmusic.org](mailto:principal@chwacademyofmusic.org).

*Thank you!*

Please note . . .  
**Summer  
 Office Hours**



In June, July and August  
 the reception office will be open  
**Monday to Thursday, from  
 8:30 a.m. to 2:30 p.m.**

**The Chilliwack Academy of Music**

*gratefully acknowledges the support received from the following:*

**Local Businesses and Organizations**

Baker Newby Lawyers LLP  
 Barton Insurance Brokers  
 Chilliwack Progress  
 Chilliwack School District  
 City of Chilliwack  
 Down 2 Earth Land & Lawn  
 Emprion Technologies  
 Pacific Eye Doctors  
 Promontory Heights Elementary  
 Rotary Club of Chilliwack  
 Soprema Inc.  
 St. Thomas Anglican Church  
 UFV Department of Theatre  
 Wendy Atkinson & Company

**Benefactors**

Anonymous  
 Allen and Elizabeth Brandt  
 Norman and Lorna MacLaren  
 Dr. John and Mrs. Agatha Wilford  
 Dr. Andrew and Mrs. Marysia Zaleski

**Advocates**

Clara Cartmell  
 Sam and Elizabeth Dunbar  
 Dr. Ron and Mrs. Mary Macleod  
 Betty Meagher

**Patrons**

Rita Boake  
 Bart and Nini Bolwyn  
 Margaret Crabtree  
 Eileen Evans  
 Marilyn Fane  
 Susan Flynn

The Glover Family  
 Ian and Audrey Greig  
 Rolf and Shirley Hundvik  
 Susanne Kope  
 Hans and Caron Larsen  
 John and Rosemary Lee  
 Douglas May  
 Peter and Hilda Martens  
 Trish Mitchell  
 Iain and Barbara Murray  
 Owen Nelmes  
 Rick and Marg Paulding  
 Lona and Jim Peacock  
 Marian Peterson  
 Paula Quick  
 Joan Sutcliffe  
 Shaun and Niki Taylor  
 Bill and Coralea Towler  
 Robert Turner  
 Gwyneth Wakely  
 Lucy E. Williams



For more information about the  
**CHILLIWACK ACADEMY OF MUSIC**, or to become a *Friend of the Academy*  
 Please call our office at 604 792-0790  
 Or visit our website at [www.chwacademyofmusic.org](http://www.chwacademyofmusic.org)